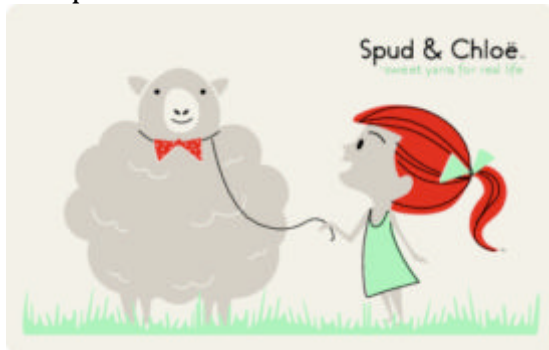




Mini-Reversible Duck and Bunny

An original pattern by, Susan B. Anderson
For Spud & Chloë



<http://spudandchloe.com/blog>

<http://spudandchloe.com>

Finished measurements: 3 inches tall by 2 inches wide

Yarn:

Spud & Chloë Sweater (55% superwash wool, 45% organic cotton; 100 grams/160 yards) 1 skein each of Ice Cream #7500, Firefly #7505 and a small amount of Pollen #7508

Needles: US size 6 double-pointed needles, set of 4 or size to obtain gauge

Materials:

Small amount of fiberfill
Scissors
Ruler or tape measure
Yarn needle
Black embroidery floss

Abbreviations:

k knit

p purl

k2tog knit 2 stitches together

ssk slip 2 stitches separately as if to knit, then knit the 2 slipped stitches together through the back loop

m1 make one stitch by lifting the bar between the two stitches on the needles onto the left needle, then knit the bar through the back loop

kfb knit in the front and back of the same stitch

k3tog knit 3 stitches together

rnd(s) round(s)

st(s) stitch(es)

Gauge: 5 ½ stitches per inch in stockinette stitch

**Duck:****Body:**

With Firefly cast on 27 stitches placing 9 stitches on each of 3 needles. Join to work in the round being careful not to twist the stitches. Place a stitch marker on the first stitch.

Knit every round until the body measures 1 ½ inches above the cast on edge.

Decrease rounds:

Rnd 1: (k1, ssk, k3, k2tog, k1) repeat on each needle (7 sts per needle, 21 sts total remain)

Rnd 2: knit

Rnd 3: (k1, ssk, k1, k2tog, k1) repeat on each needle (5 sts per needle, 15 sts total remain)

Rnd 4: knit

Rnd 5: (k1, ssk, k2tog) repeat on each needle (3 sts per needle, 9 sts total remain)

Cut the yarn and place the end on a yarn needle. Pull the end through the remaining stitches and pull up tight to close the hole. Leave the end out on the right side to use later to whipstitch the head to the body.

Head:

Starting at the back of the head with Firefly, cast on 9 stitches placing 3 stitches on each of 3 needles. Join to work in the round being careful not to twist the stitches. Place a marker on the first stitch.

Rnd 1: knit

Rnd 2: kfb in each stitch (6 sts per needle, 18 sts total)

Rnd 3: knit

Rnd 4: kfb, k4, kfb (8 sts per needle, 24 sts total)

Place a stitch marker on round 4 and leave it there. Knit every round until the head measures 1 inch above the stitch marker.

Place the end from the cast on stitches on a yarn needle. Take some stitches to close up the hole at the back of the head.

Decrease rounds:

Rnd 1: (k2, k2tog) repeat to the end of the round (6 sts per needle, 18 sts total remain)

Rnd 2: (k1, k2tog) repeat to the end of the round (4 sts per needle, 12 sts total remain)

Rnd 3: (k1, k2tog, k1) repeat on each needle (3 sts per needle, 9 sts total remain)

Switch to Pollen.

Stuff head with fiberfill.

**Beak:**

Working in Pollen.

Rnds 1-3: knit

Rnd 4: knit to the last 2 stitches, k2tog (8 sts remain)

Place the first 4 stitches on 1 double-pointed needle and the last 4 stitches on a second double-pointed needle.

Finish any stuffing for the head and stuff the beak lightly.

Cut the yarn leaving a 6-inch end. Place the end on a yarn needle and use kitchener stitch to close the end of the beak.

Duck feet:

With Pollen cast on cast on 8 stitches placing 3 stitches on each of 2 double-pointed needles and 2 stitches on the third double-pointed needle. Join to work in the round being careful not to twist the stitches. Place a stitch marker on the first stitch.

Rnds 1-4: knit

Divide the stitches on 2 double-pointed needles, 4 stitches on each needle. Cut the yarn and place the end on a yarn needle. Use kitchener stitch to close the end. Pull the end to the inside and trim. Whipstitch the cast on together to close and then whipstitch the foot to the front of the duck.



Bunny:

With Ice Cream complete the body the same as for the Duck.

Head:

With Ice Cream complete the head the same as for the Duck through round 3 of the decrease rounds.

Stuff the head with fiberfill. Cut the yarn and place the end on a yarn needle. Pull the end through the remaining stitches and pull up tight to close the hole. Pull the end through to the inside and trim so the end stays inside.

Bunny Ear (make 2):

With Ice Cream and using two double-pointed needles to work back and forth, cast on 3 stitches.

Row 1: knit

Row 2: k1, m1, k1, m1, k1 (5 sts)

Rows 3-12: knit

Row 13: k1, ssk, k2tog (3 sts remain)

Row 14: knit

Row 15: k3tog (1 st remains)

Cut the yarn and pull the end through the remaining stitch. Weave in the end to the underside of the ear and trim.

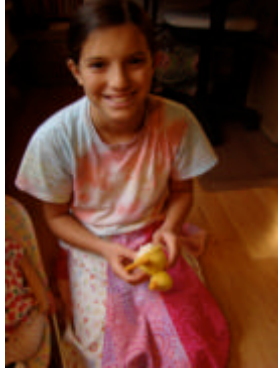
Whipstitch the ear to the side of the head using the photo as a guide.

Face:

With a length of black embroidery floss placed on a yarn needle take 2 tiny straight stitches for the eyes. Take three tiny straight stitches to make the nose. Use the photo as a guide.

Finishing:

Take a length of Ice Cream on a yarn needle and take a few stitches to attach the heads together with the wrong sides together. Before stitching the heads together, make sure the faces are going in opposite directions.



With the wrong sides together tuck the Bunny inside of the Duck and line up the cast on edges. Place the end from the cast on stitches on the Duck on a yarn needle. Whipstitch the Duck and the Bunny together. Pull the end to the inside in between the bodies and trim to stay inside.

Start playing!

Copyright 2010:

Pattern designed, written and owned by Spud & Chloë. This pattern is for personal use only and may not be sold, photocopied or copied electronically or distributed in any way without permission from the designer. This pattern may not be sold in knitted form without permission from the designer and/or company. Selling the knitted item for charity or fundraising purposes with all proceeds going to the charity is always welcome.